



2023 SHEA VINEYARD PINOT NOIR

YEAR PLANTED & ACREAGE: Original planting 1989, 140 acres total, KWC blocks 17.13 acres

SPACING: 7 X 5 ft. , 1,244 vines/acre

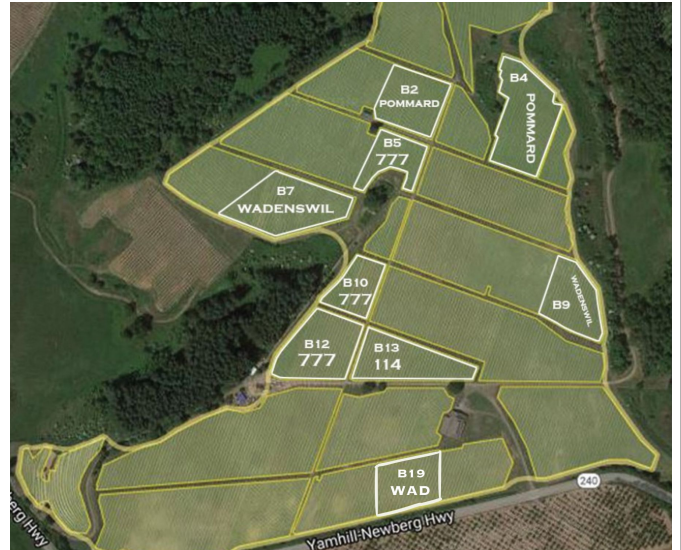
ELEVATION & ASPECT: 540-600 ft. , S

CLONES & ROOTSTOCK: Blk 2: Pommard on 3309, Blk 4: Pommard on 3309, Blk 7: Wadenswil on 44-53, Blk 13: 114 on 101-14, Blk 5: 777 on 3309, Blk 9: Wadenswil on 3309, Blk 10: 777 on 101-14, Blk 12: 777 on 101-14, Blk 19: Wadenswil
Third Hill: Pommard on 101-14

MOTHER ROCK: Ancient Marine Sediments

SOIL SERIES: Goodin and Melbourne Series

AVA: Yamhill-Carlton



*Third Hill not pictured on map

TASTING NOTES: Savory, floral and spice focused— A complex nose of rose, spice, and sandalwood. Palate is greeted by fresh red fruit, including raspberry and tart cherry. It's balanced with bright acidity, baking spice, and a smooth, juicy texture.

VINTAGE: 2023 was a banner year for us. We had very good crop levels, plenty of heat to ripen properly and had a long season with extended hang time. The weather was very mild avoiding extremes of cold or heat. There were no frost scares at the start of the season and only two days at 100 degrees in the entire growing season. All great wine is about balance. This year the beautiful array of aromatics, plush texture and the frame of acidity are seriously compelling.

FARMING: Sustainably farmed

AGING REGIME: 10-11 months in 20% new French oak barrels

ALCOHOL: 12.6% **pH:** 3.53 **TA:** 5.9g/L

PRODUCTION: 2,660 six-pack cases

SCORES: No reviews yet



Artwork shows the practice of shoot positioning.