



2022 SHEA VINEYARD PINOT NOIR

YEAR PLANTED & ACREAGE: Original planting 1989, 140 acres total, KWC blocks 17.13 acres

SPACING: 7 X 5 ft. , 1,244 vines/acre

ELEVATION & ASPECT: 540-600 ft. , S

CLONES & ROOTSTOCK: Blk 2: Pommard on 3309, Blk 4: Pommard on 3309, Blk 7: Wadenswil on 44-53, Blk 13: 114 on 101-14, Blk 5: 777 on 3309, Blk 9: Wadenswil on 3309, Blk 10: 777 on 101-14, Blk 12: 777 on 101-14, Blk 19: Wadenswil
Third Hill: Pommard on 101-14

MOTHER ROCK: Ancient Marine Sediments

SOIL SERIES: Goodin and Melbourne Series

AVA: Yamhill-Carlton

TASTING NOTES: Savory, floral and spice focused— Elegant red fruits of raspberry, red plum and cranberry are met with soothing floral hints of rose petal, violet and geranium. Balanced and juicy on the palate.

VINTAGE: 2022 was a miraculous vintage for Ken Wright Cellars. Mother Nature never ceases to amaze us. A record late cold front caused extensive damage to the young buds, threatening whether we would have any fruit to harvest. Our first miracle was record levels of fertility. Our second was the driest and warmest October in memory.

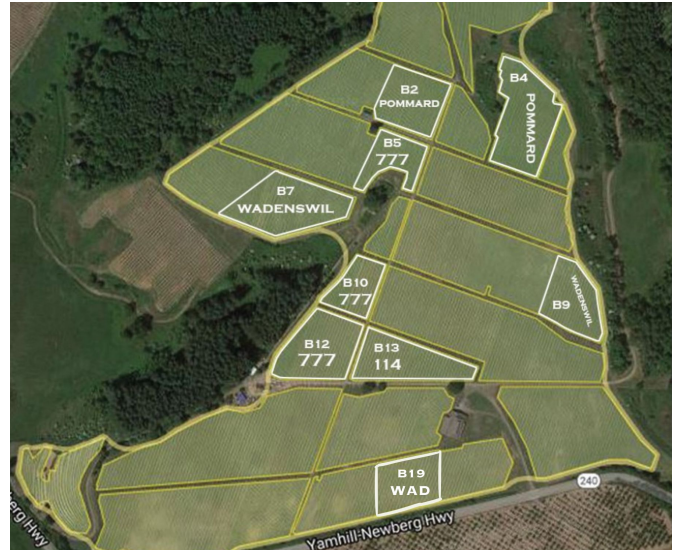
FARMING: Sustainably farmed

AGING REGIME: 10-11 months in 20% new French oak barrels

ALCOHOL: 12.7% **pH:** 3.66 **TA:** 5.3g/L

PRODUCTION: 1305 six-pack cases

SCORES: No reviews yet



*Third Hill not pictured on map



Artwork shows the practice of shoot positioning.