



2022

## LATCHKEY VINEYARD PINOT NOIR

**YEAR PLANTED & ACREAGE:** 2008, 3.23 acres

**SPACING:** 6 X 3 ft. , 2,440 vines/acre

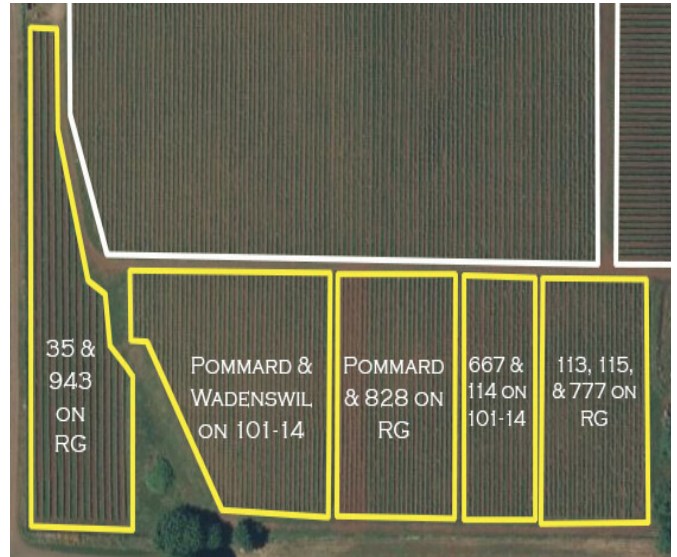
**ELEVATION & ASPECT:** 500 ft. , E-SE

**CLONES & ROOTSTOCK:** Pommard. Wadenswil, 828, 38, 943, 667, 777, 113, 115, and 114. Approx 60% on Riparia Gloire and 40% on 101-14.

**MOTHER ROCK:** Volcanic

**SOIL SERIES:** Jory

**AVA:** Dundee Hills



**TASTING NOTES:** Red fruit focused— Lively and bright notes of strawberry, Rainier cherry, and rhubarb are complemented with delicate floral notes of rose petal and violets. Soft and silky on the palate with inviting suede tannins on the finish.

**VINTAGE:** 2022 was a miraculous vintage for Ken Wright Cellars. Mother Nature never ceases to amaze us. A record late cold front caused extensive damage to the young buds, threatening whether we would have any fruit to harvest. Our first miracle was record levels of fertility. Our second was the driest and warmest October in memory.

**FARMING:** Sustainably farmed

**AGING REGIME:** 10-11 months in 20% new French oak barrels

**ALCOHOL:** 13%    **pH:** 3.63    **TA:** 5.1g/L

**PRODUCTION:** 255 six-pack cases

**SCORES:** No reviews yet



Artwork shows Latchkey vineyard through our winery's 200 year old doors.