



2021 SHEA VINEYARD PINOT NOIR

YEAR PLANTED & ACREAGE: Original planting 1989, 140 acres total, KWC blocks 17.13 acres

SPACING: 7 X 5 ft. , 1,244 vines/acre

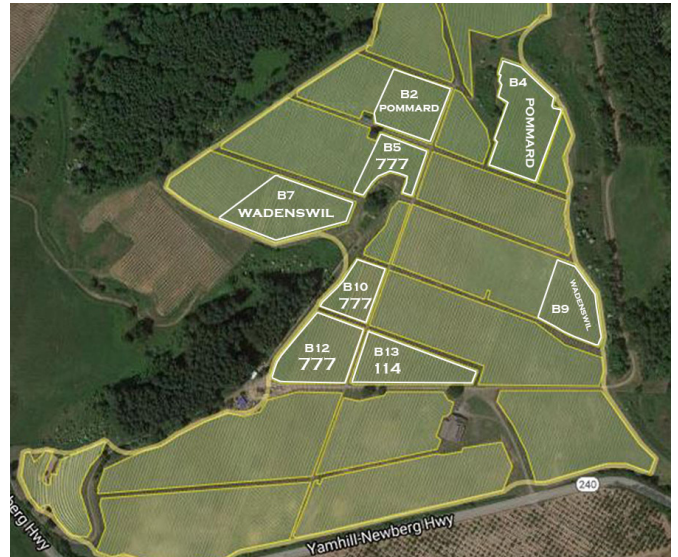
ELEVATION & ASPECT: 540-600 ft. , S

CLONES & ROOTSTOCK: Blk 2: Pommard on 3309, Blk 4: Pommard on 3309, Blk 7: Wadenswil on 44-53, Blk 13: 114 on 101-14, Blk 5: 777 on 3309, Blk 9: Wadenswil on 3309, Blk 10: 777 on 101-14, Blk 12: 777 on 101-14, Third Hill: Pommard on 101-14

MOTHER ROCK: Ancient Marine Sediments

SOIL SERIES: Goodin and Melbourne Series

AVA: Yamhill-Carlton



TASTING NOTES: Savory, floral and spice focused—Bursting Bursting with black cherry and bramble berries, the palate is juicy and lithe with savory hints of cola, rose petal and milk chocolate.

VINTAGE: Our crop level averaged just under three tons this year which was perfect for the accumulated heat we experienced over the growing season. Disease was nonexistent with the dry conditions of the summer months and the fermentation's proceeded perfectly with nary a one going "sideways" on us. The wine is rich, expressive, detailed and deeply colored.

FARMING: Sustainably farmed

AGING REGIME: 10-11 months in 20% new French oak barrels

ALCOHOL: 12.8% **pH:** **TA:** g/L

PRODUCTION: 1,432 cases

SCORES: No reviews yet



Artwork shows the practice of shoot positioning.